

# PRINCE2®

 | Practitioner  
course

Copyright © 2016 Knowledge Train Limited | PRINCE2® is a registered trade mark of AXELOS Limited



# Who is this for?

## Current project team members

If you have passed your PRINCE2 Foundation exam, you have most likely been able to practice PRINCE2 within your project. The Practitioner certificate will qualify you as a registered PRINCE2 Practitioner which shows that you are able to manage simple projects using PRINCE2.

“I was supporting projects and wanted to start managing them instead”

## Unemployed project managers

If you are currently seeking a job in project management, then becoming PRINCE2 certified will instantly increase your chances of employment. You will find that most project manager job specifications expect you to be a full PRINCE2 Practitioner, rather than just having completed the Foundation course.

“I had enough experience, but I never heard back from any interviews.”

## Aspiring project managers

If you're looking to work in project management, PRINCE2 certification will instantly give you a head start by making your CV stand out from the crowd. If you are motivated towards a successful career transition you can be confident that the PRINCE2 Practitioner is one of the hottest certifications around.

“I wanted to work in project management but had no relevant experience”

# Why this course?

The PRINCE2 Practitioner qualification is the next highest level after the PRINCE2 Foundation qualification. The PRINCE2 Foundation qualification enables you to work as an informed member of a project team, whereas the Practitioner shows you can apply PRINCE2 to simple projects.

If you are looking to manage projects rather than support them, then the PRINCE2 Practitioner course is for you.

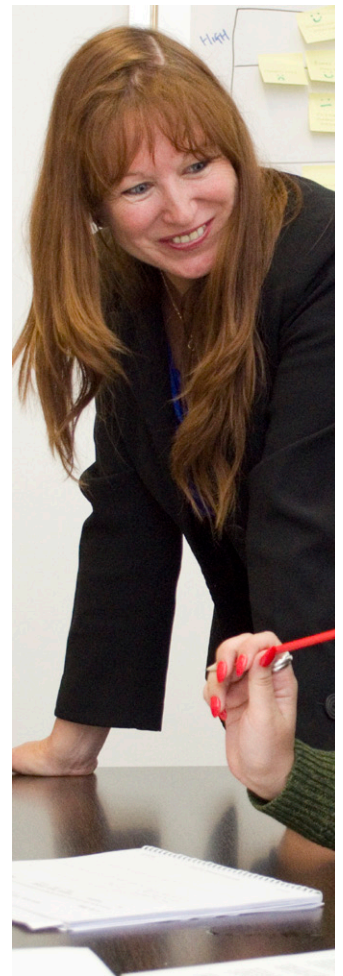


## What are the benefits for individuals attending the course?

- Certification will instantly boost your CV and job prospects
- You'll learn a common vocabulary to use across your projects
- You'll gain authority and proof of your PRINCE2 knowledge
- You'll learn better ways of managing your projects
- You'll gain the world's most popular project management qualification

## For organizations sending their staff on PRINCE2 training

- PRINCE2 can be used on any type/size of project
- PRINCE2 can work alongside other methods/practices e.g. SCRUM, agile, PMP
- Your existing project management practices can be continuously improved
- Senior managers' time can be saved by eliminating regular progress meetings
- All project team members can speak the same language/terminology
- Everyone on the project can have clearly defined responsibilities
- PRINCE2 can increase your projects' return on investment



## Who teaches this course?



### Kobus Scheepers

A richly experienced project manager across the US, UK and South Africa, Kobus has managed global projects. An early career as a barrister and subsequent retraining in the IT sector has helped shape Kobus into an engaging communicator with much to offer those he trains. Familiarity with the challenges of institutional and large corporate projects adds a useful perspective to public and corporate delegates.

### Just see what our students say

*The trainer has the knowledge and delivers in a lively way, given that PRINCE2 is otherwise a quite mundane methodology. I liked the humour added.*

**Vanja Lisic, British Embassy**





## Nicholas Duffew

Nick has over 10 years' experience in the education sector, working in Japan and the UK. He brings students a combination of skills from his teaching profession and project management career, where he worked within a number of educational institutions. Nick has been praised by students on his incredible knowledge of PRINCE2, patient manner and the relaxed atmosphere within the classroom.

## Just see what our students say

*Nick truly engaged with students, explained complex concepts with clarity and made extra effort to ensure we understood the material.*

**Szymon Kikla, Kultura**

## What are the course details?

- 2 day training course, available Wednesday to Friday or 2 days over one weekend
- Located in Central London
- 3-4 hours pre-course study
- Homework of between 2 hours per night
- Pre-requisite is proof of passing the PRINCE2 Foundation exam, or have completed the PMP, CAPM, or one of the IPMA Levels A, B, C or D
- Class size of no more than 16
- Officially accredited by PEOPLECERT

## What's included in the price?

- Exclusive online pre-course preparation
- Training (focused on exam preparation) from an approved PRINCE2 Trainer
- PRINCE2 Practitioner exam
- Sample exam papers
- PRINCE2 Practitioner certificate (on passing the exam)
- Guide to passing the exam
- Refreshments



## A location to love

Situated in beautiful Charterhouse Square, in the historical heart of Central London, our training centre is just a few minutes away from Barbican and Farringdon stations. Many students make the most of their time here by exploring the local area and sightseeing! We are a 10 minute walk from the performing arts venue Barbican Centre, the historical Museum of London and the iconic St Paul's Cathedral.



## Course and exam structure

The course lasts for 2 days (a half day, one full day and a further half day). The bulk of the PRINCE2 Practitioner course builds on your existing knowledge of PRINCE2, by showing you how to apply the method to the various styles of exam questions.

On the last morning you will sit the Practitioner exam. This is a 2.5 hour multiple choice exam containing 80 questions and you must score a minimum of 44 correct answers to pass.

Our PRINCE2 Practitioner exam pass rate since 2012 has averaged 83%, 10% higher than the UK National average.



# Why choose Knowledge Train?



## Obsessed with project management

Since 2005, we have focussed on one subject: project management. Not many other providers can say that. In fact, many of them offer courses in seemingly everything. Our director is an experienced project manager with years in the field. And so are all of our trainers. You can feel confident that you will be taught by an expert with a passion for project management.

## Customer service, not sales

We know sales teams are annoying. So we don't use this approach. No telemarketing. No cold calls. No pestering. And no passing the call around like a disease. Call or email us and get through to a helpful person who knows our courses inside out. We are a small team who get to know our customers well. Have confidence we will help you.



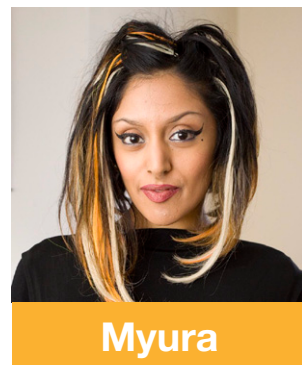
Alison



Jay



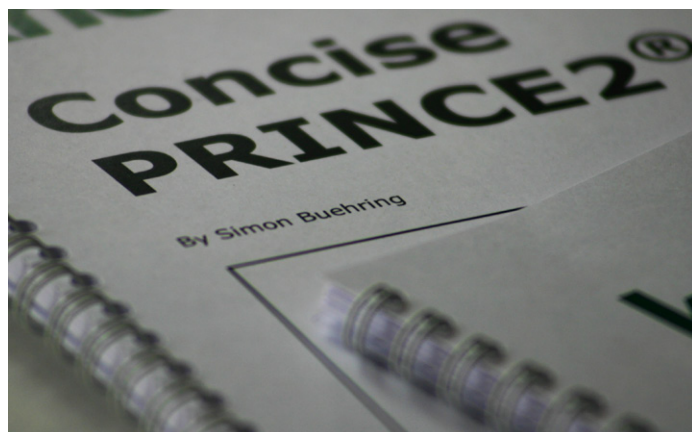
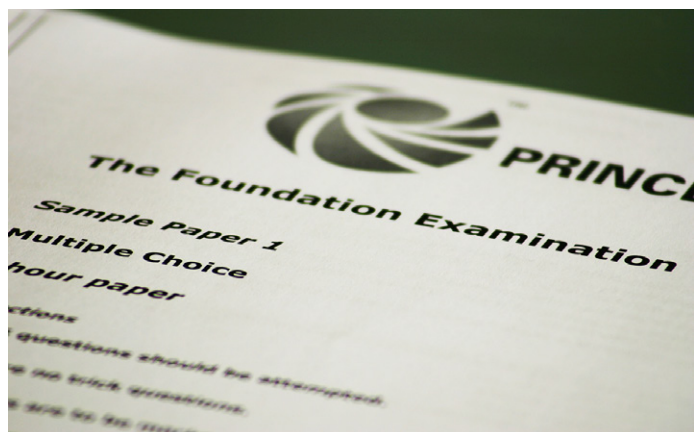
Steph



Myura

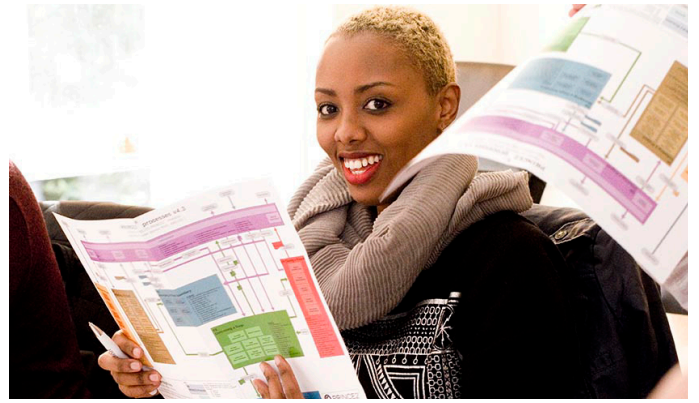
## High exam results, year after year

Need more proof that we offer great courses? Look no further than our exam success statistics. Since 2012, we have achieved above average exam success rates for our PRINCE2 courses. A huge 99% of students pass the PRINCE2 Foundation and 83% pass the PRINCE2 Practitioner. Not booking PRINCE2? Our MSP, Agile and PRINCE2 Agile exam pass rates are all well above 83%.



## Bold & brilliant course materials

Black and white course materials on plain A4 paper just doesn't scream 'quality' to us. So we have created perhaps the most colourful and helpful course materials out there. Students praise the course guides and eBooks designed in-house by our own graphic designer. Pre-course study is concise and effective. Just 3-4 hours of online study before you attend. That's all.



## Training, not lecturing

When training we like to encourage discussion. No dull lectures. No lengthy PowerPoint presentations. The atmosphere on our courses is light-hearted. Students even miss the vibe when they leave. Our absolute maximum class size is just 16 people. Some providers cram in as many as 30 to a room. Again. We are experienced in providing courses. We know a smaller class is much, much better.

## In the heart of the city



Spacious. Bright. With working facilities. And a decent cup of tea or coffee. This is the type of venue we offer our students. You deserve a proper classroom to learn in. All of our London courses are conveniently located within walking distance of Barbican station. And rest assured that our Birmingham and Manchester venues are also right in the heart of the city.





## No corporate greed

All businesses have an aim to make money. And in that respect we are no different from the others. But. Our terms and conditions have not been created to scam you out of your money. We won't keep your money in the event of course cancellation. Some training providers will. If we have to cancel your course you will be entitled to get a refund or move your date.



## Courses to suit modern life

We know our students lead busy lives. So we offer courses on weekdays, at the weekend or online. Some courses are run every single week or month. There are a wide variety of dates to choose from. Feel confident that you will find a course to fit in with your schedule. No matter how busy you are.

## Finally, read our genuine reviews

Check out our [Google Places page](#) and our website to see what past students really think about us. We don't use third party review websites like some companies out there. They often manipulate those reviews in their favour. And they delete the negative ones.

We have nothing to hide. Have a look around the website. Call us. Email us. Ask us anything.

### Review summary

4.8  
★★★★★  
54 reviews

5 star  
4 star  
3 star  
2 star  
1 star



knowledge train reviews

knowledge train reviews

### Knowledge Train ★

Website

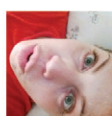
Directions

4.8 ★★★★★ 54 Google reviews  
Education

Address: 14 Charterhouse Square, London EC1M 6AX

Phone: 020 7148 5985

Hours: Open today · 9am–5:30pm



Jess Anderson

★★★★★

Brilliant week, enjoyed it thoroughly. Tutor was excellent, learnt a hell of a lot and he had a great sense of humour which mean I found myself smiling throughout :D I passed both the Foundation and the Practitioner and wouldn't have done it without Kobus (our tutor). Location is great, friendly environment and class size is great - about 16 of us I think. Highly recommended! Plus it was the cheapest 'classroom' course I could find in London!



# Knowledge TRAIN ●●●

## Address

2nd floor  
14 Charterhouse Square  
London  
EC1M 6AX

## Telephone

+44 (0)20 7148 5985

## Web

[www.knowledgetrain.co.uk](http://www.knowledgetrain.co.uk)

## Email

[info@knowledgetrain.co.uk](mailto:info@knowledgetrain.co.uk)

